



7 February 2024

Adelaide University Curriculum Reviewers and Advisors

c/o Professor Jane Burry
The University of Adelaide
Head of School
School of Architecture and Civil Engineering
jane.burry@adelaide.edu.au

Dear Adelaide University Curriculum Reviewers and Advisors,

We are writing to explain the significance of Landscape Architecture in the new university curriculum, its importance to the development and economy of the State of South Australia and the reasons why we expect the workforce demand to continue to grow, and the student demand to grow in response.

The University of Adelaide currently offers the only Landscape Architecture program in South Australia. The Master of Landscape Architecture is offered together with a unique double-degree: Master of Architecture & Master of Landscape Architecture. Graduates from these programs are highly sought after to cater to the significant growth in the industry at scale.

Landscape Architects play a critical role in the design of healthy cities in a wide range of local, metropolitan, and regional projects. Landscape Architects shape our cities, towns, and regions. As cities grow and become more densely occupied, so does the demand for the expertise of landscape architects in the public and private sector. Whether it is master-planning, design or place-making, Landscape Architects contribute fundamentally to the design of public and private projects connected to the growth of the State. These range from street scapes, public parks, play spaces, sports and leisure facilities, and educational facilities, to waterfronts and transport initiatives, to multi-million-dollar infrastructure projects.

With design skills that are grounded in knowledge of climate, ecology and horticulture, Landscape Architects respond to social, cultural, environmental, and economic parameters within projects which improve communities and the environment, while contributing to government policy, state planning initiatives and progressive thinking. They change lives and the experience of the constructed environment. With these skills, Landscape Architects are well equipped to meet the opportunities in Local Government, State Government, and the private sector.

AILA recently commissioned a report detailing the how the profession is shaping better places and the contribution of the profession of landscape architecture to Australia's economy. Refer Attached Infographic from *Draft Economic contribution of landscape architecture industry report*, AILA - 2022. This is reflected in the types of workplaces that appoint Landscape Architects which include private practice (medium to large), local government workplaces,



statutory authorities and NGA's, state government agencies, multidisciplinary organisations (architecture, interior, planning), multinational practices and small bespoke practices.

Demand for landscape architects is demonstrated in the number of job opportunities advertised nationally and via the [AILA jobs board](#). While demand for architecture related services is beginning to plateau, our members report continuing demand for services with little sign of easing into the future. Indications are that projects are becoming more sensitive to the importance of green infrastructure and its importance in supporting energy efficiency and climate change mitigation.

Ongoing demand for Landscape architectural expertise has also been shown by the numerous completed high profile and current major South Australian infrastructure projects. These include: Adelaide's North South Corridor, River Torrens to Darlington (T2D) project, Majors Road interchange, Fleurieu Connections, Adelaide Aquatic Centre, Grade separations projects, Northern Adelaide Suburbs Road Upgrades, Port Dock Railway line project, Old Murray Bridge Refurbishment as well as initiatives connected to the Greater Adelaide Regional Plan (GARP). This is an exemplar list only.

We also note there are a range of issues that were heightened during the recent worldwide pandemic leading to greater demand for Landscape Architects leading projects related to the below issues:

- equitable and safe access to quality, local, and green parks and open spaces
- equipping our cities, towns, and regions to be climate resilient in a warming, dry climate
- supporting more people walking and cycling
- authentic and effective reconciliation with First Nations people

Landscape Architecture education and practice has held a special place in this state. The high standard of practice and liveability of Adelaide has made it an exceptionally favourable place to educate both Australian and International Landscape architects.

The percentage of graduates nationally in employment is approximately 75% based on AILA membership data, however this figure also includes overseas graduates who may have returned to their home country or are otherwise uncontactable. Employers report to AILA that in the absence of a large number of fully qualified graduate landscape architects, they are either not filling positions or employing unqualified persons to fill the roles. This represents a risk to the profession as a whole and the public and client.

The educational excellence of The University of Adelaide's Landscape Architecture program has not only fostered local talent but has also attracted international students, contributing to the global landscape architecture community. This is reflected in the significant projects led by Adelaide-based landscape architects, showcasing the program's impact on both local and international stages. Projects include Festival Plaza, Lightsview Linear Park, North-South Corridor Regency Road to Pym Street (R2P) Project Green Infrastructure Plan, Greening Port Pirie, Wangayarta, Yunggoendi Mande Cultural Gathering Space - Flinders University, Southbank



Boulevard - Melbourne, Adelaide City Skatepark, South Parklands Wetland, Thorndon Park Playground, Granite Island Causeway Project and Railway Plaza - Victor Harbor.

However, as noted above, the profession faces challenges with filling qualified positions. Maintaining and growing the Master of Landscape Architecture program is crucial to supporting the continued contribution of well-prepared professionals to the field.

The program's unique position in South Australia, its contribution to the state's development, and the evident demand for landscape architectural expertise, supports the state's economic and environmental objectives but also plays a crucial role in advancing sustainable design and community well-being.

As the national professional body and educational accrediting body representing landscape architects and their education in Australia, we would welcome the opportunity to meet with your team to provide any further information about the profession, its accreditation, and future educational needs.

Yours sincerely

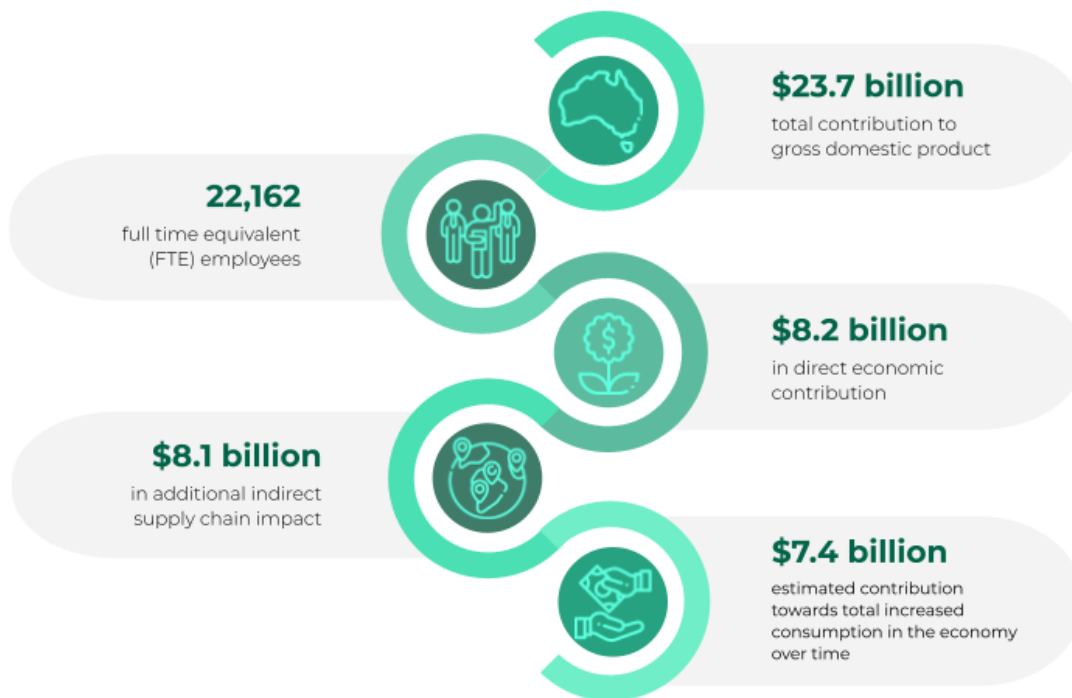
Dr Janelle Arbon
AILA SA Chapter President

Ben Stockwin
AILA CEO

Shaping better places: the contribution* of the profession of landscape architecture to Australia's economy



Australian Institute of Landscape Architects



Additional benefits of WELL DESIGNED SPACES

Landscape architects generate additional economic, environmental, social and cultural benefits as a result of their work in the design, construction and maintenance of private and public use spaces.



*'Draft Economic contribution of landscape architecture industry report', AILA, 2022

